



The ground floor of the headquarters features a perforated facade made of glass-fibre reinforced concrete and the upper floors have a white marble facade.

Agemar headquarters in Athens

Angelicooussis Group, the largest Greek maritime group, conducted a two-stage competition in 2012 to select who would build its headquarters. The Athens based office RENA SAKELLARIDOU SPARCH designed a building that self-confidently established itself in the skyline of the city.

Building owner

Angelicooussis Group, Athens, GR

Architect

RENA SAKELLARIDOU SPARCH, Athens, GR

Project Manager

Dimand S.A., Maroussi, GR

Main Contractor

Intrakat, Paiania, GR

Sto products

Facade insulation system (StoTherm Classic),
acoustic ceiling system (StoSilent Distance)

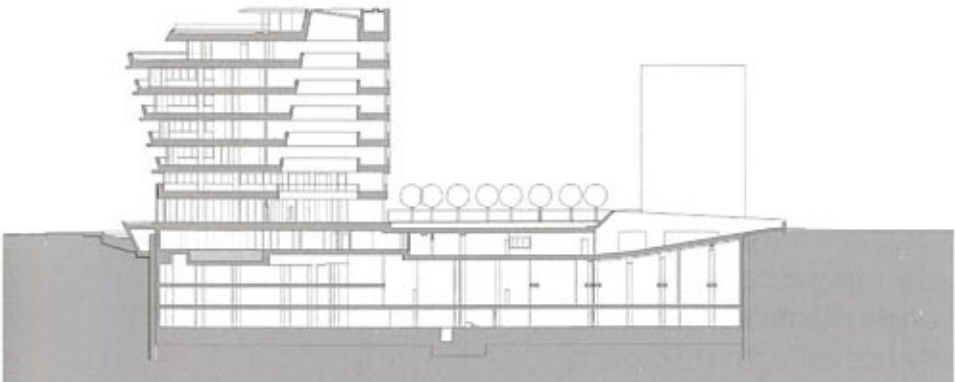
Applicator

Kouzelis, Nikaia-Athens, GR, Gips Alfa Constructions P
and J, Piraeus, GR, Tsarossis Bros, Ilion-Athens, GR

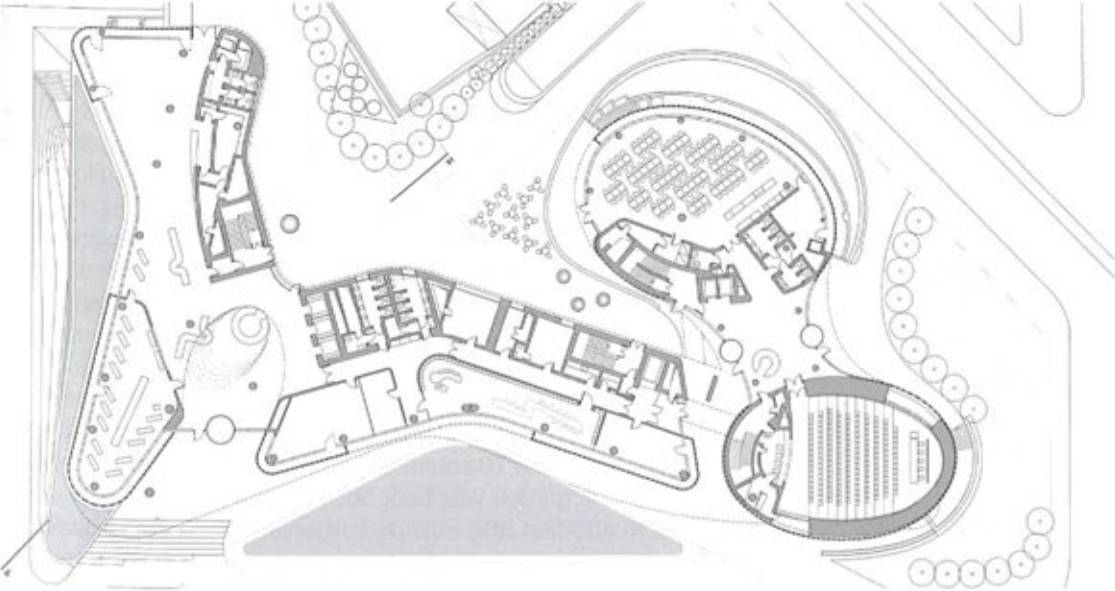
Photos

Erietta Attali, New York, US / Paris, FR

The proximity of the sea and the maritime nature of owner, Angelicooussis Maritime Group served as the theme for the new headquarters on Doiranis street in Athens, and the theme "Sea Voyage" was chosen for the concept of its design. RENA SAKELLARIDOU SPARCH created a flowing architecture, a flexible, non-finite form with long, horizontal lines that expands or contracts and adapts to the city's urban tissue. From a purely visual perspective, the building, which is called Agemar, stands out from its surroundings: Thick walls in white CNC cut curved marble transform in the interior the urban view to what could be seen as something resembling a film strip. This impressive building stands out as a landmark in the urban landscape of Athens. The company's head office is divided into the actual headquarters and a wing referred to as "The Crew". The former includes the foyer – featuring an atrium with the shape of an ellipsis – whose impressive spatial quality and atmosphere is emphasized by a vivid interplay of light and shadows, as well as the company museum, a library, open-plan offices across five storeys and an executive floor. The latter is home to an amphitheatre, a restaurant and additional offices. Four subterranean floors house a fitness centre and a pool, bridge and engine simulators as well as a parking garage. Seamless acoustic ceilings on all floors ensure a pleasant ambient sound.



Section (S1)



Ground plan, ground floor